

**CAREER COUNSELING
SERVICES ARE RIGHT FOR YOU
IF...**

- You are undecided about a major or career
- You are thinking about changing your career
- You have a job or interest, but are unsure of what career path to follow
- You are preparing for the job search process
- You are considering graduate or professional school
- You are struggling with the impact of your career or relationships

**HOW DO I ACCESS BLUEPRINT
DISCOVER?**

Contact Mahogane Management by phone or email for more information and price.

Standard Session: 2.5 hours

Additional session packages:

Bronze: 3 hours

Gold: 6 hours

Silver: 8 hours

Platinum: 10 hours

**MAHOGANE
MANAGEMENT**

LOS ANGELES * MEMPHIS * NEW YORK

Phone: 888.879.4555 x510

Fax: 917.386.2509

Email: info@mahoganemanagement.com

<http://www.mahogane.com>

**CAREER
BLUEPRINT**

**MAHOGANE
MANAGEMENT**



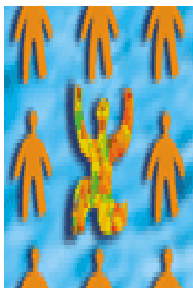
Helping you connect the pieces

BLUEPRINT DISCOVER

Exploring career options or identifying your career, professional or personal goals can be overwhelming and exciting. The **Blueprint Discover program** offers individual career counseling sessions to individuals. The Blueprint Discover program offers a variety of solutions to help you in your career exploration and decision-making journey.

Mahogane's human resource professionals are available to provide **individual counseling**, that includes **personal and career assessments**, and a customized blueprint that will assist you in mapping out your goals.

The **Blueprint Discover program** is a blended program that incorporates online and one on one interaction. This allows you various mediums to explore your interest and skills and



major/career options to match those skills. We can help you identify your academic and career goals and develop a plan that suits your lifestyle.

WHAT IS CAREER COUNSELING?

Career development is a life-long process involving self-exploration, creating career options, and establishing short and long-term goals based on your immediate and future needs. Career counseling is a method through which career development is facilitated.

Career counseling services offered through Mahogane Management takes into account personal, family, cultural, professional, and geographic factors in the career development process.



WHAT IS BLUEPRINT DISCOVER?

Inventories: BLUEPRINT DISCOVER uses inventories to collect information about your interests, abilities, and values. Your results are then integrated into your Individual Career Plan (ICP) to demonstrate how your own interests, abilities, and values are related to each other and to specific career areas.

Occupations: BLUEPRINT DISCOVER assists you in identifying individual occupations. Your program allows you to create a focused search, looking at those careers most closely related to the results of your inventories.

Majors: To find academic majors that prepare you for occupations of interest, BLUEPRINT DISCOVER offers several ways to search and obtain detailed descriptions of majors.

Schools: BLUEPRINT DISCOVER teaches you how to search for colleges and universities by state, major, keyword, degree type, and characteristics.

Job Search: BLUEPRINT DISCOVER provides job preparation services from resume writing, mock interviews, cover letters, tips for interviewing, resume critique and employment search advice for apprenticeships, internships, and unsubsidized employment.